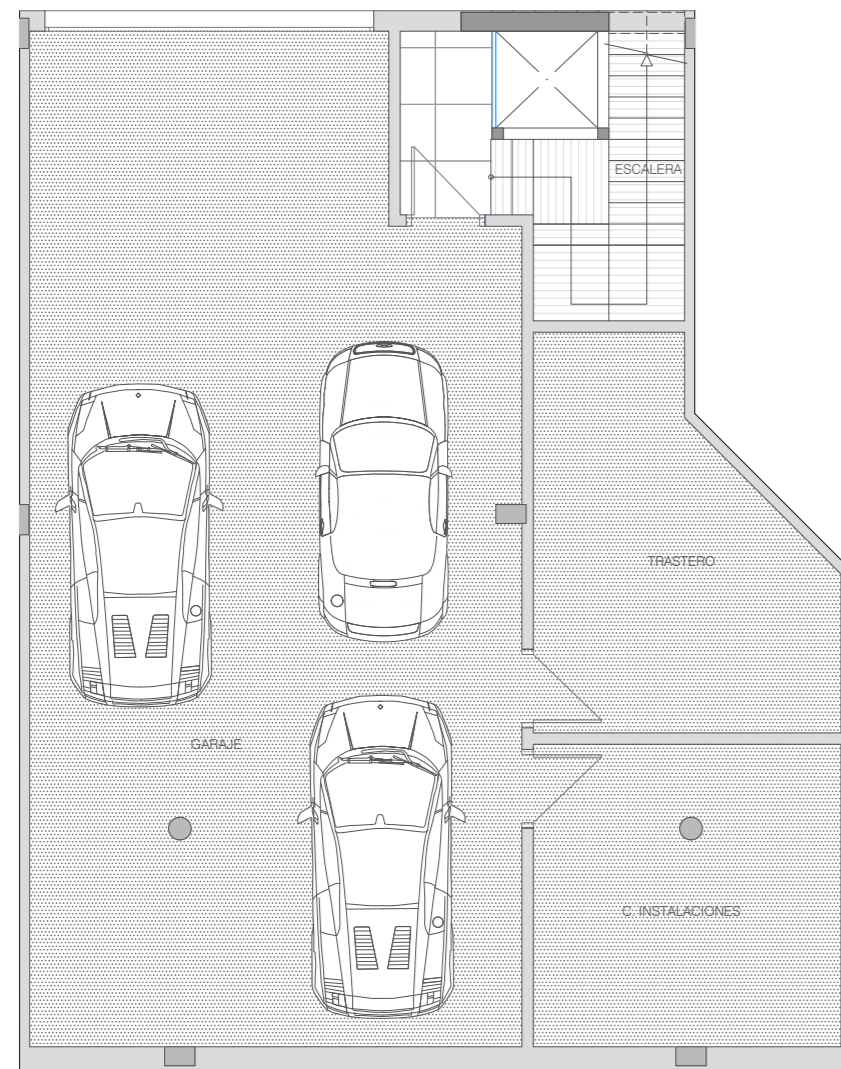


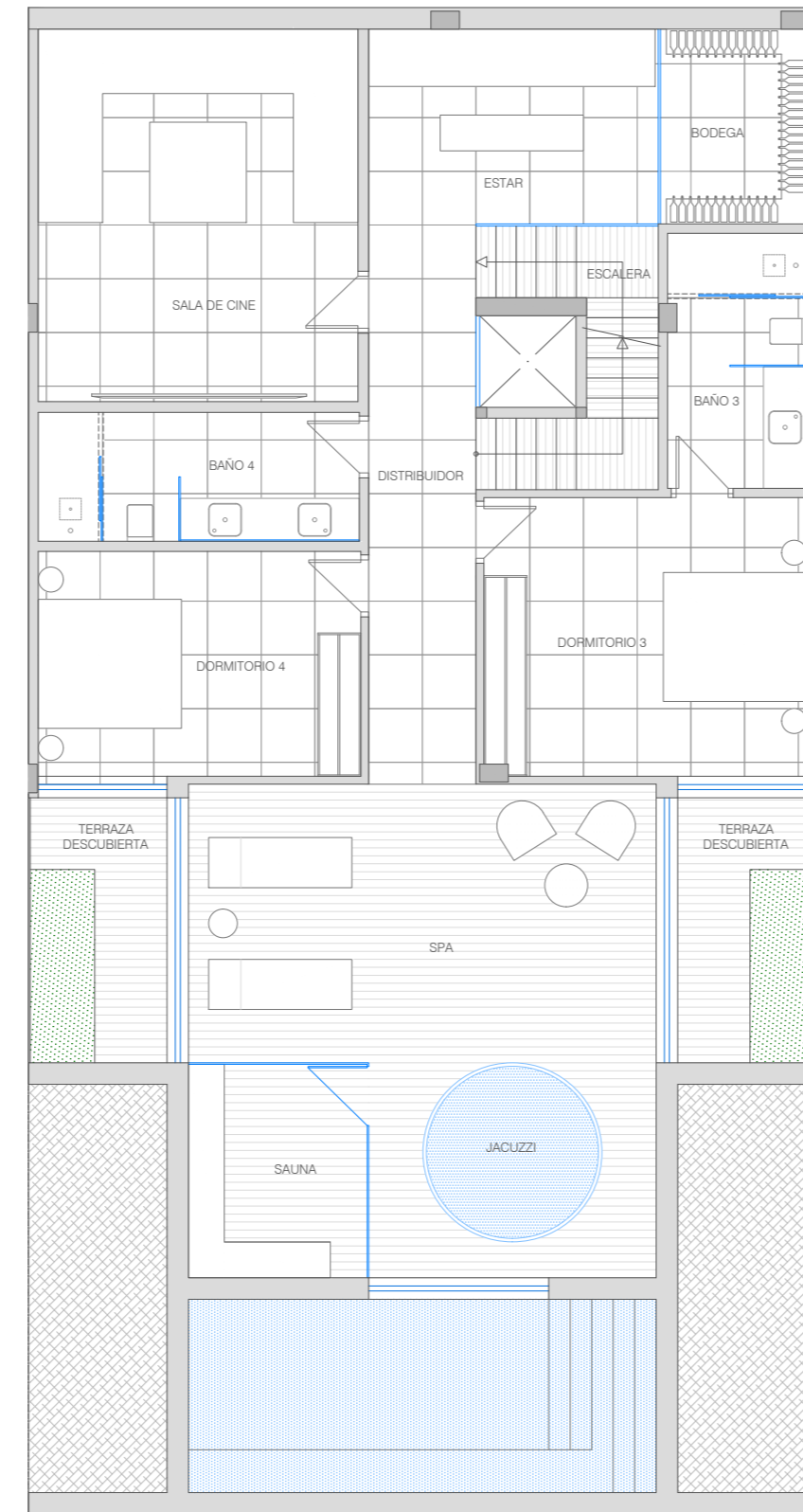


# Villa B

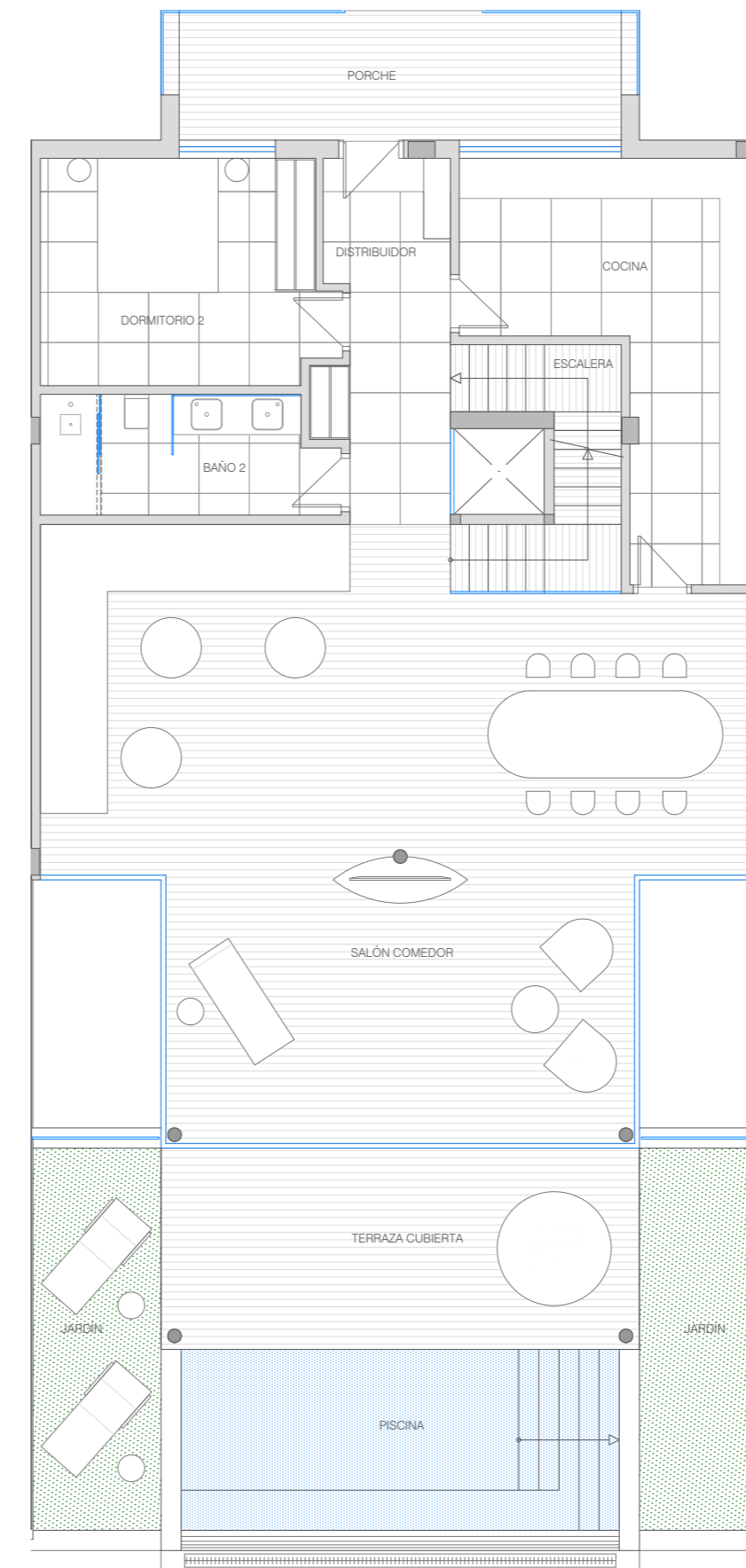
Garaje



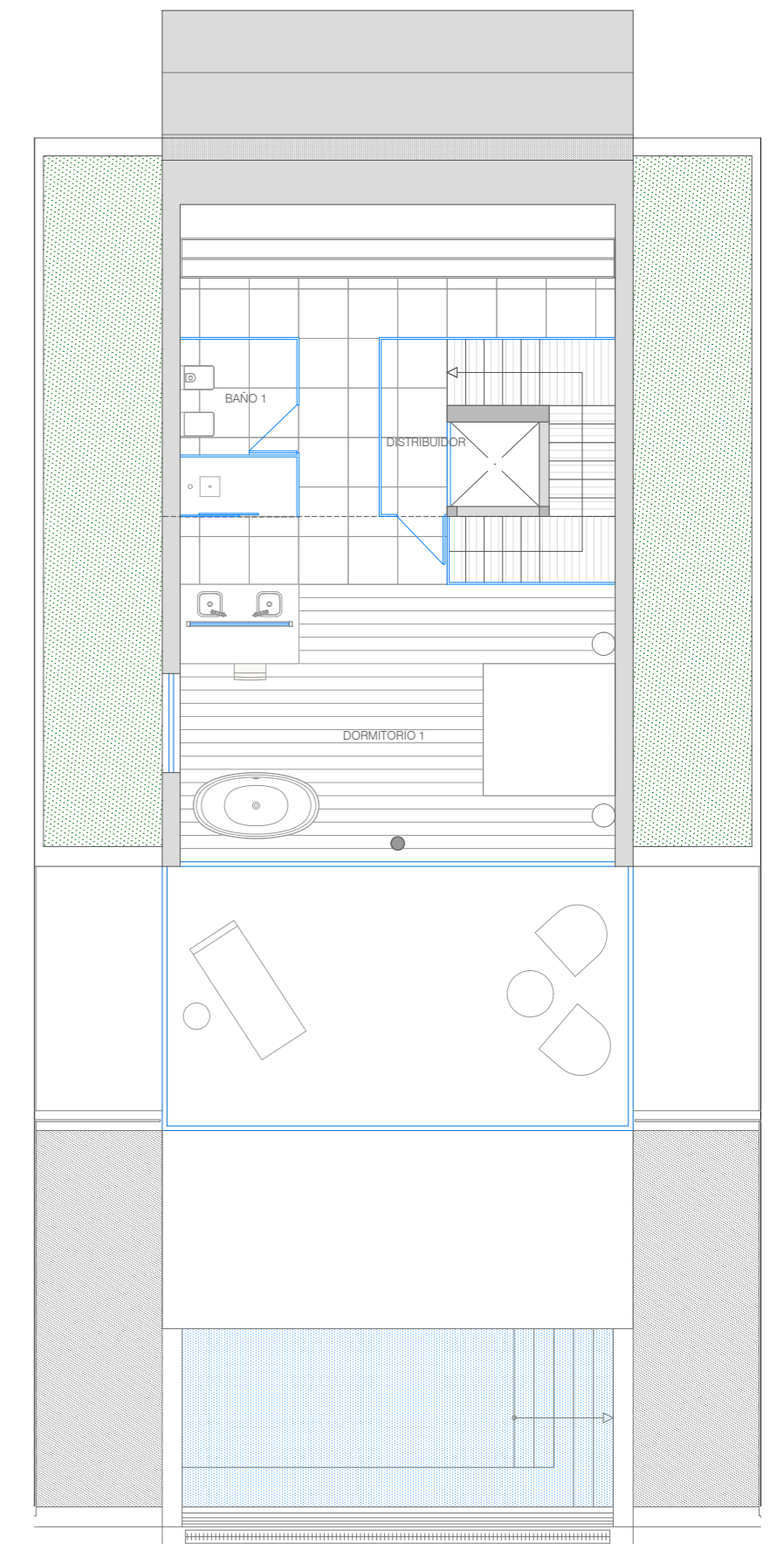
Nivel 0



Nivel 1



Nivel 2



## SUPERFICIES Villa B

SUPERFICIE DE VIVIENDA	
NIVEL 0	171,24 m <sup>2</sup>
NIVEL 1	149,85 m <sup>2</sup>
NIVEL 2	76,26 m <sup>2</sup>
SUPERFICIE DE TERRAZA	75,01 m <sup>2</sup>
SUPERFICIE DE GARAJE	103,31 m <sup>2</sup>
SUPERFICIE DE PISCINA	19,59 m <sup>2</sup>
SUPERFICIE DE TRASTERO / INST	37,52 m <sup>2</sup>
<b>SUPERF. CONST. TOTAL</b>	<b>632,78 m<sup>2</sup></b>

I  
S

